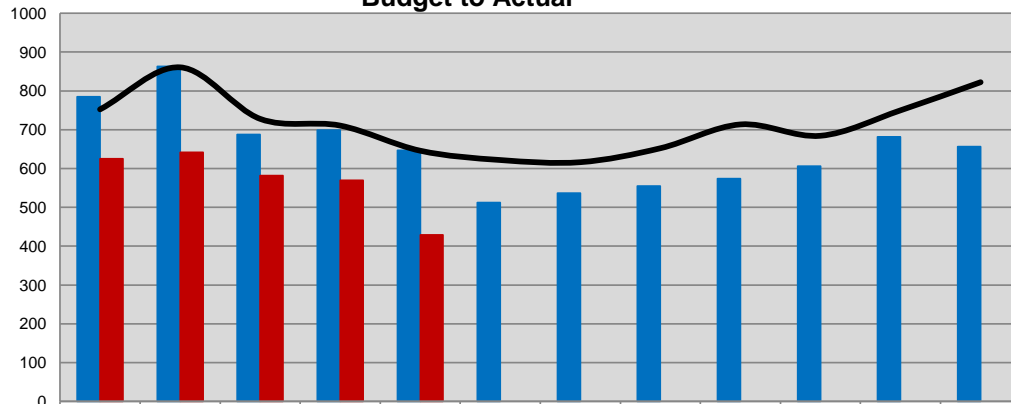
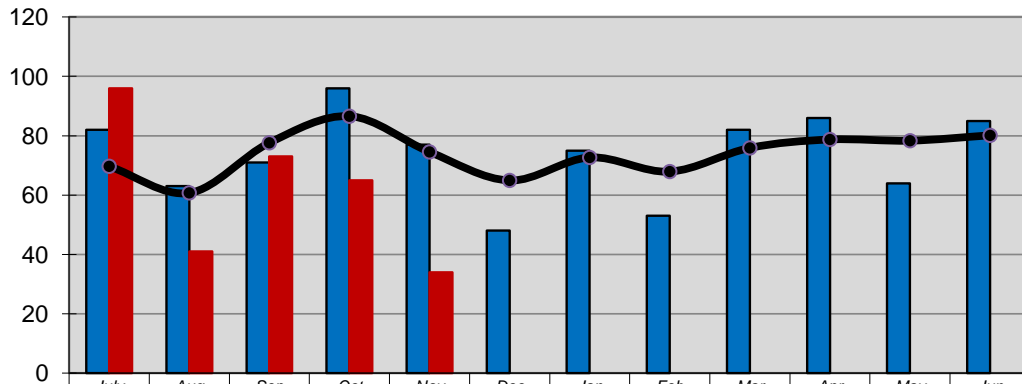


**Medical Encounters
Budget to Actual**



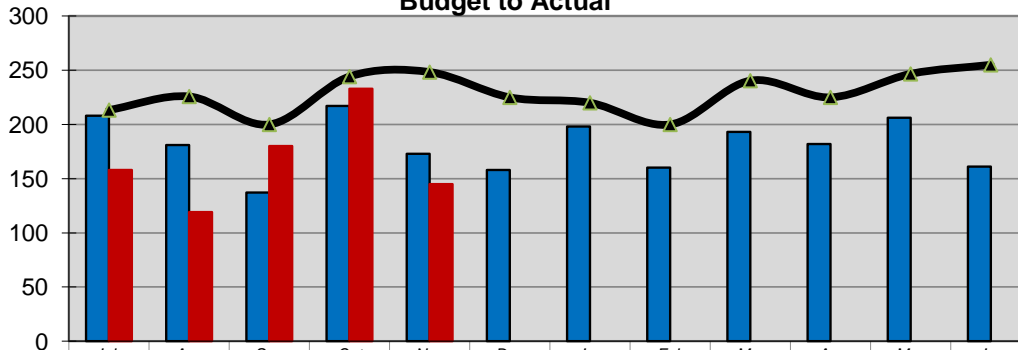
	July	Aug	Sep	Oct	Nov	Dec	Jan	Feb	Mar	Apr	May	Jun
FY 2013 Encounters	785	863	688	699	647	512	537	555	574	606	682	656
FY 2014 Encounters	625	642	582	570	429							
FY 2014 Budget	752	861	728	711	646	622	616	652	714	684	750	823

**Behavioral Health Encounters
Budget to Actual**

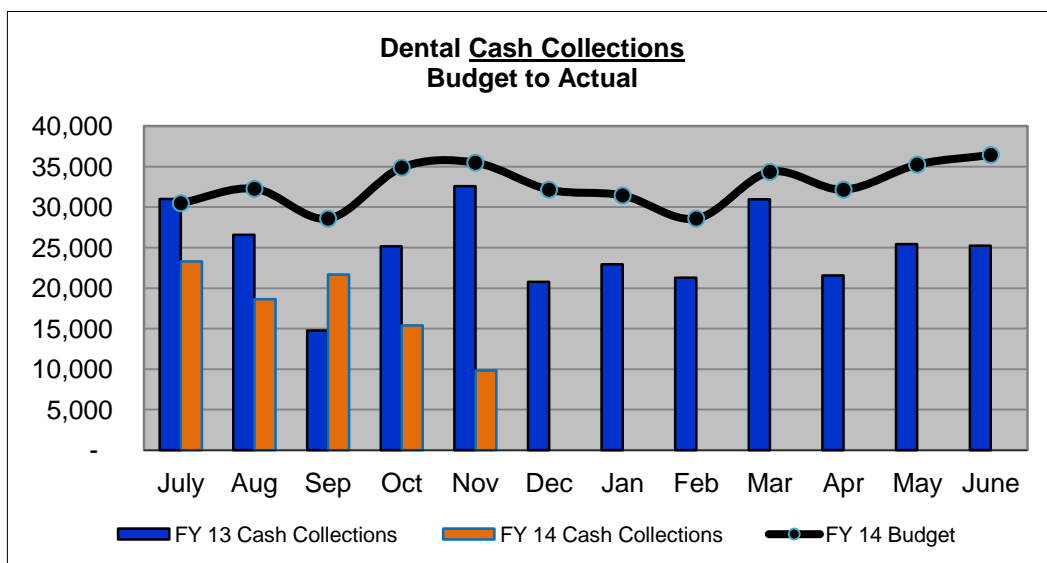
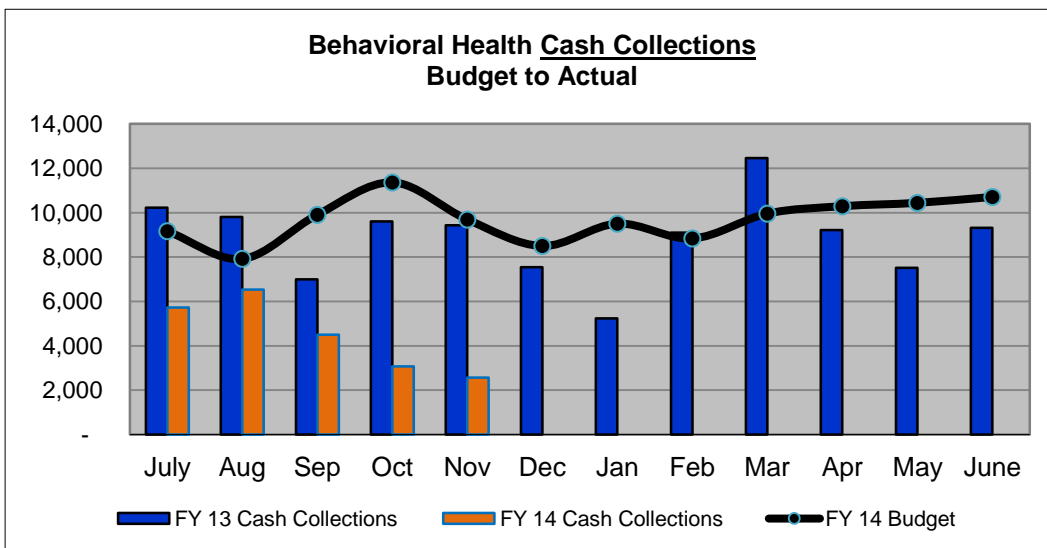
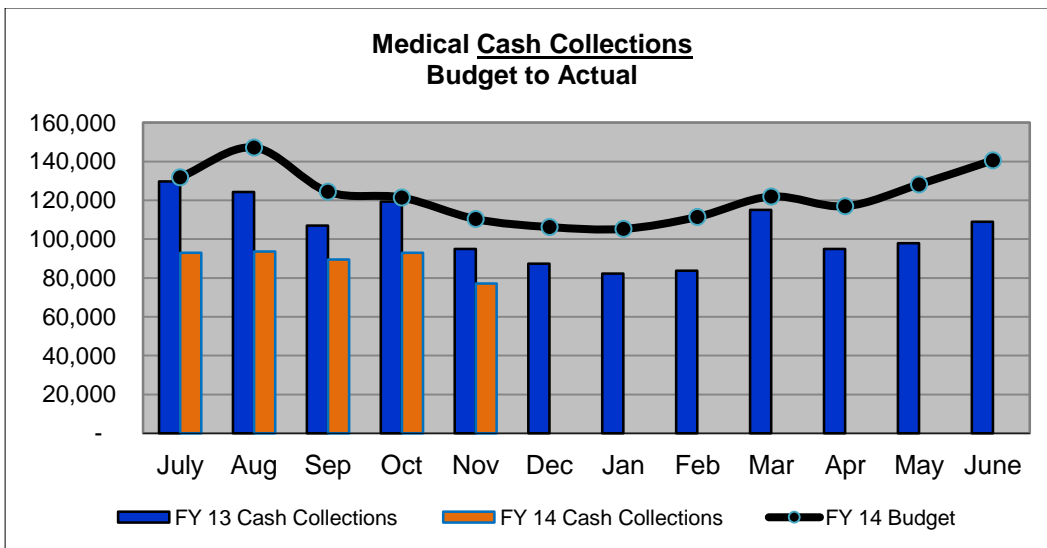


	July	Aug	Sep	Oct	Nov	Dec	Jan	Feb	Mar	Apr	May	Jun
FY 2013 Encounters	82	63	71	96	77	48	75	53	82	86	64	85
FY 2014 Encounters	96	41	73	65	34							
FY 2014 Budget	70	61	78	87	75	65	73	68	76	79	78	80

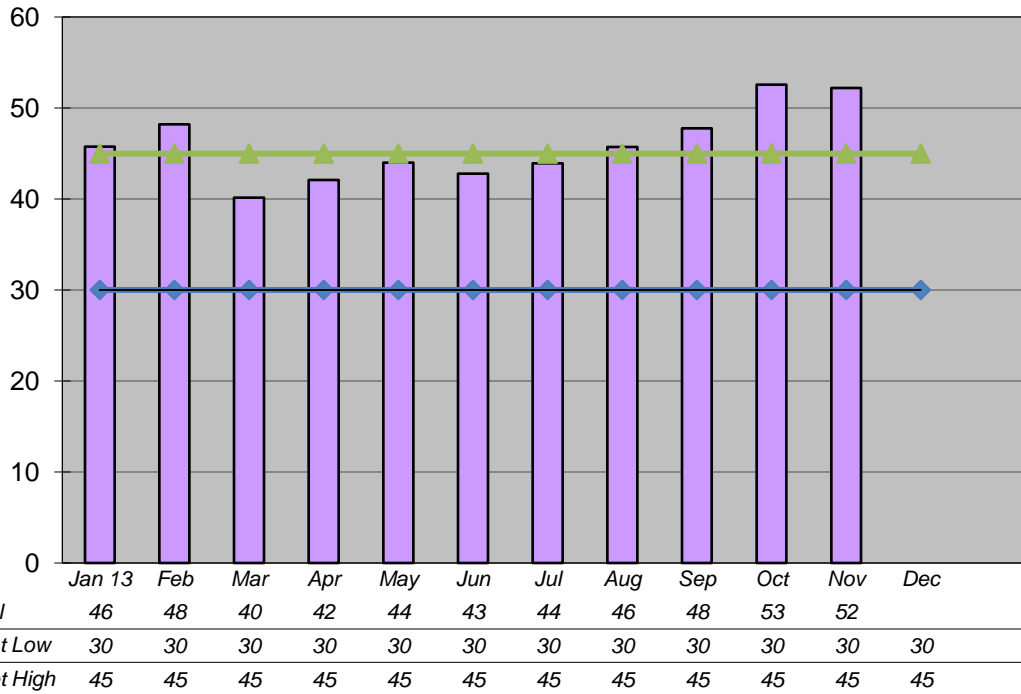
**Dental Encounters
Budget to Actual**



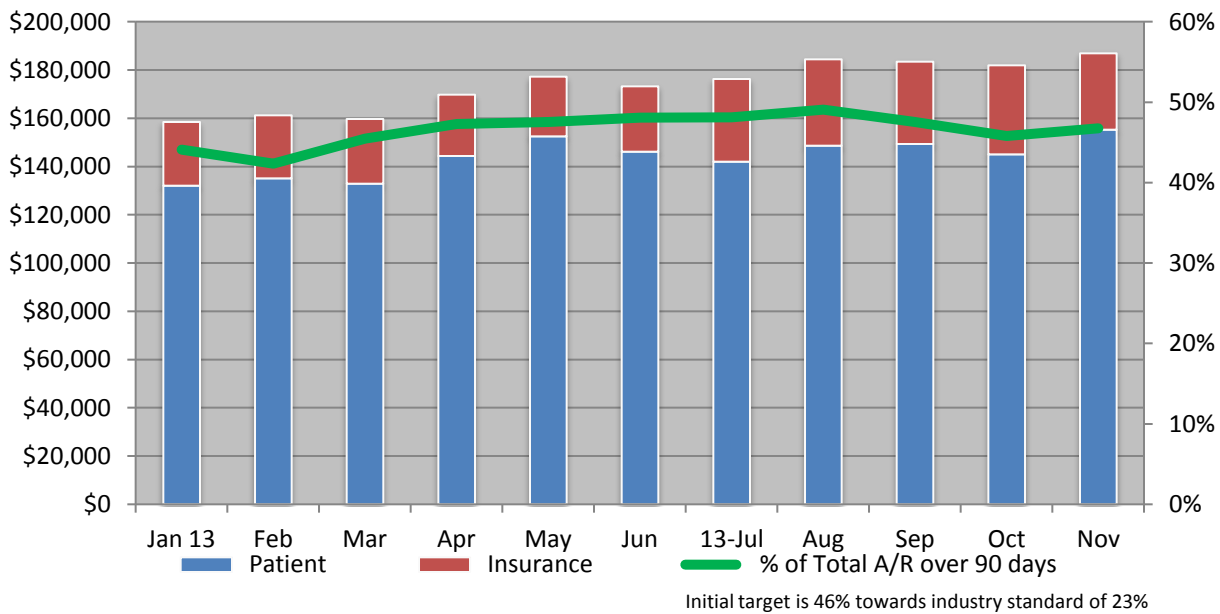
	July	Aug	Sep	Oct	Nov	Dec	Jan	Feb	Mar	Apr	May	Jun
Dental FY13	208	181	137	217	173	158	198	160	193	182	206	161
Dental FY14	158	119	180	233	145							
FY 2014 Budget	213	226	200	244	248	225	220	200	240	225	247	255



Average Days in Accounts Receivable
 measures the number of days it takes from date of service to the time we receive payment
 target range 30-45 days (AR balance divided by average charges per day)

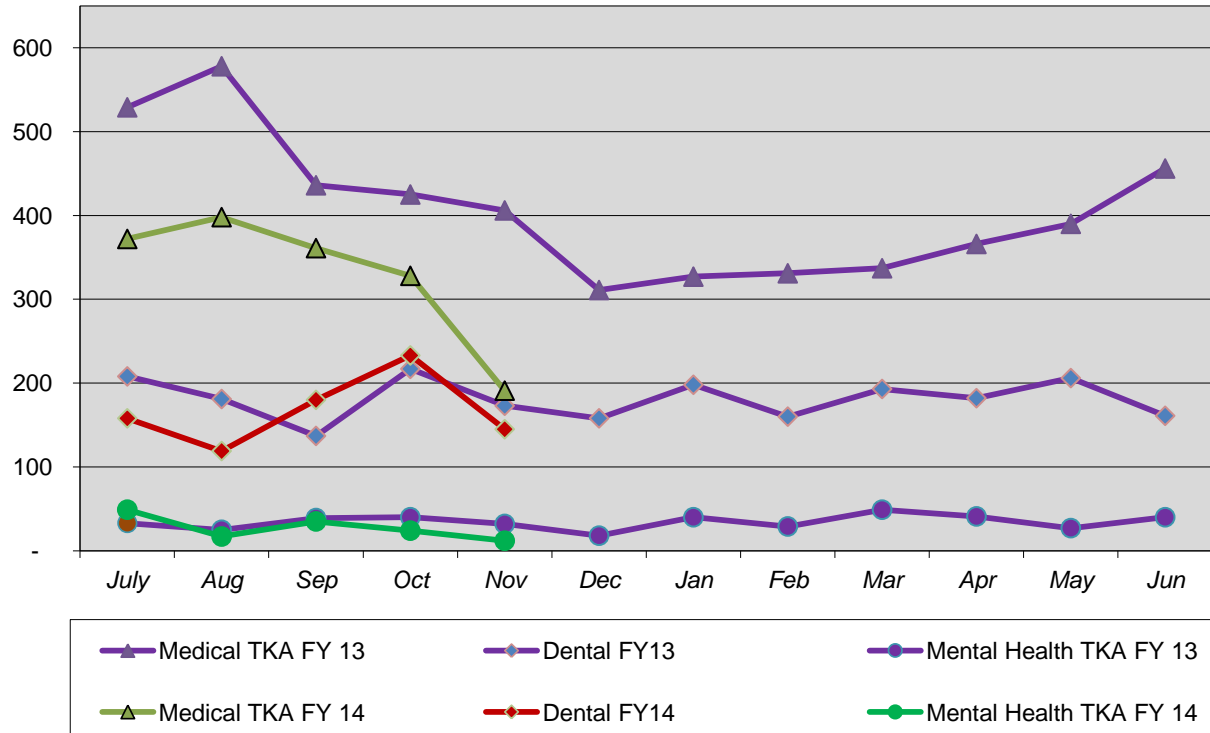


A/R over 90 Days
Medical & Mental Health

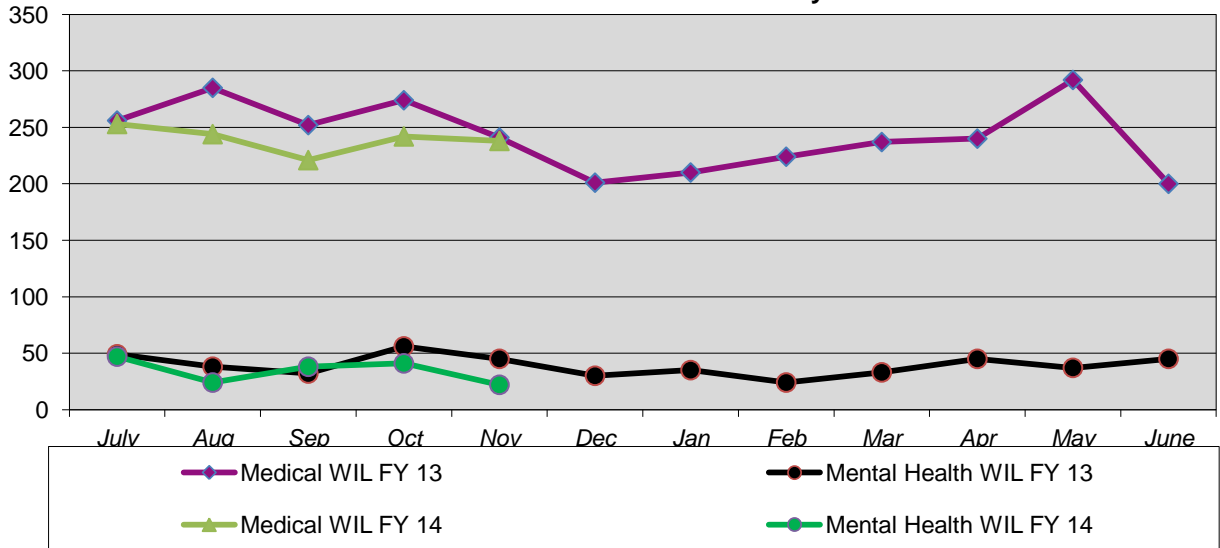


Jan 2013 - AR now includes Dental accounts.

Talkeetna Encounter History



Willow Encounter History



After Hours Visits

