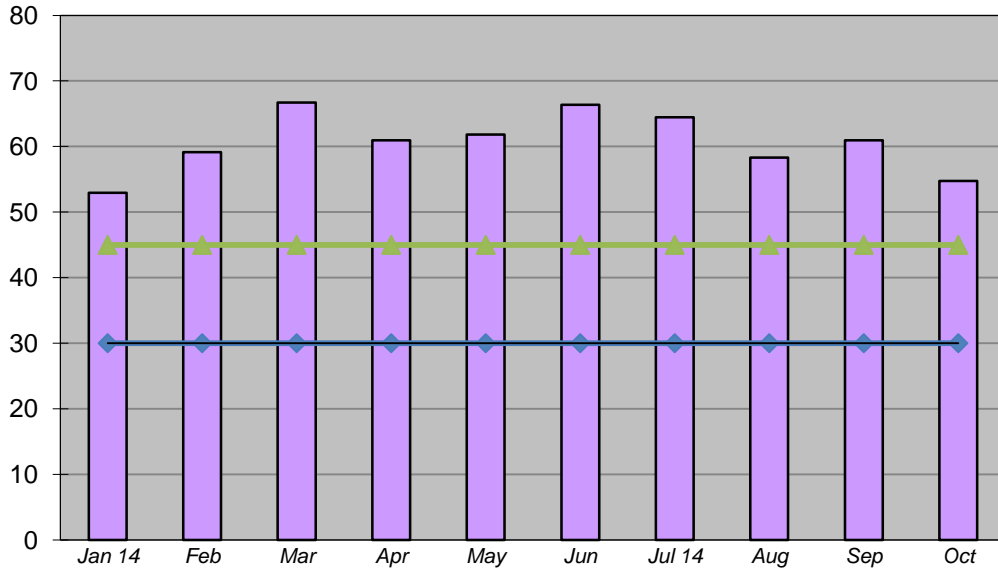


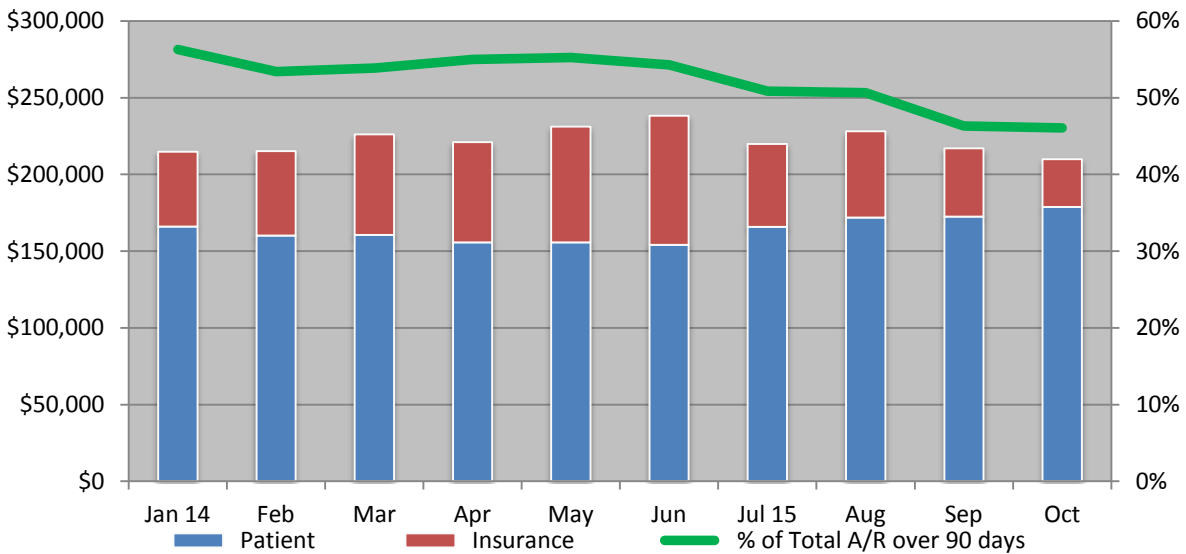
Average Days in Accounts Receivable

measures the number of days it takes from date of service to the time we receive payment
target range 30-45 days (AR balance divided by average charges per day)



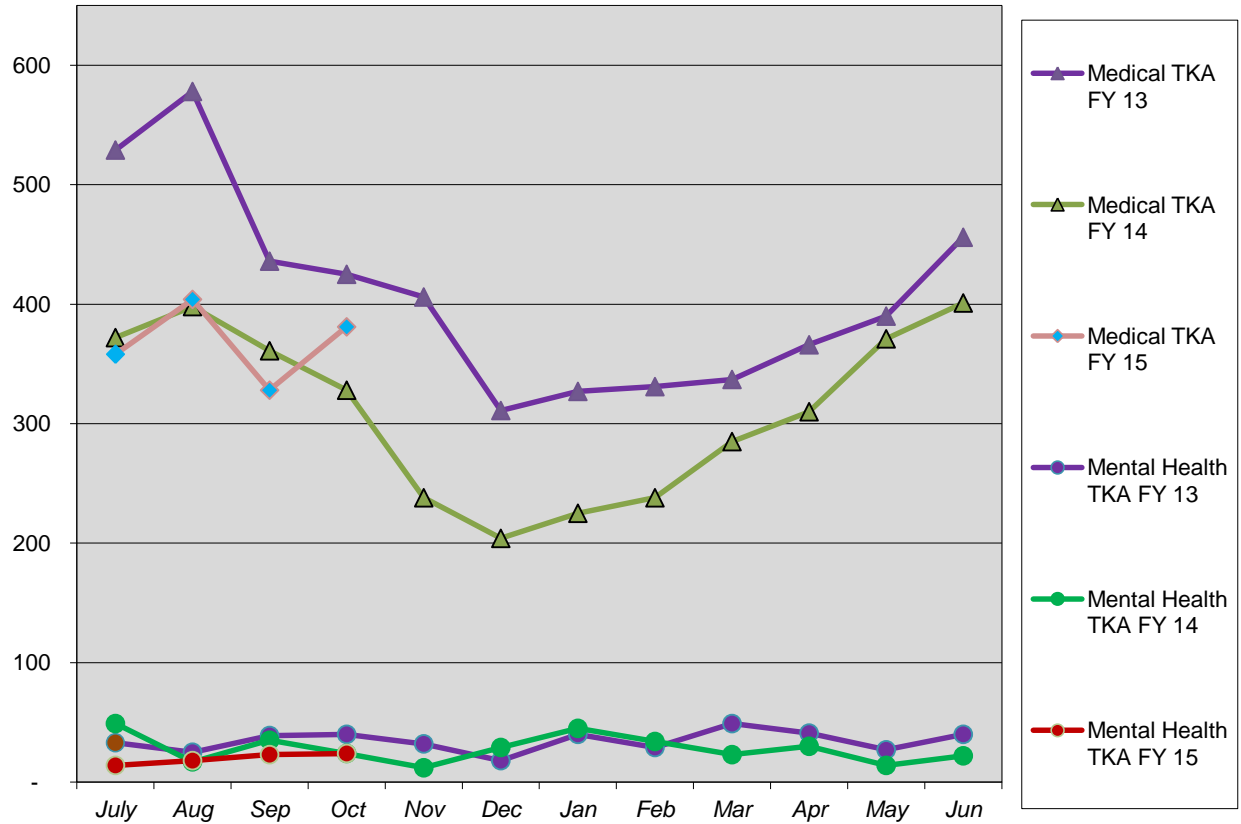
Actual	53	59	67	61	62	66	64	58	61	55
Target Low	30	30	30	30	30	30	30	30	30	30
Target High	45	45	45	45	45	45	45	45	45	45

A/R over 90 Days Medical & Mental Health



Initial target is 46% towards industry standard of 23%

Talkeetna Encounter History



Willow Encounter History

