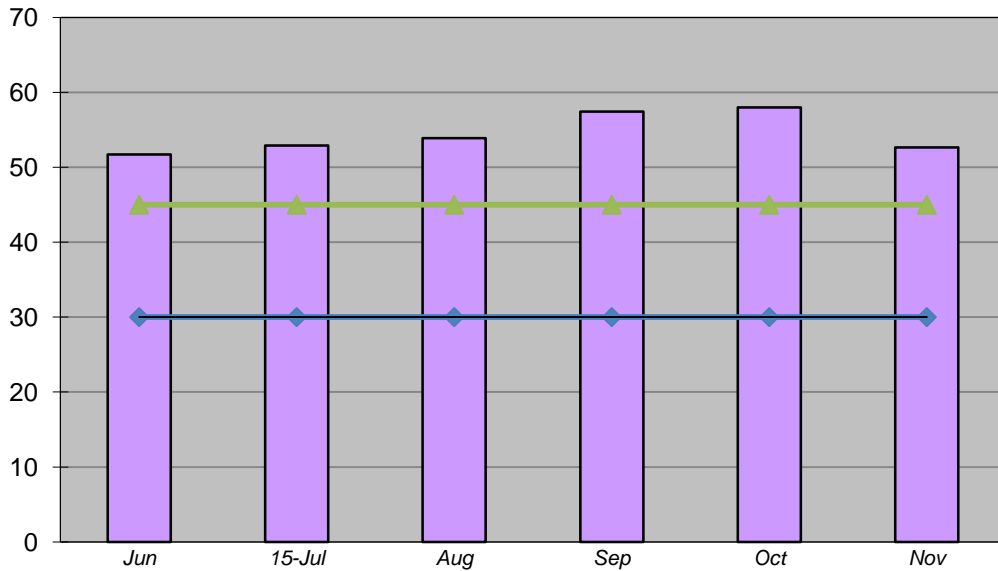


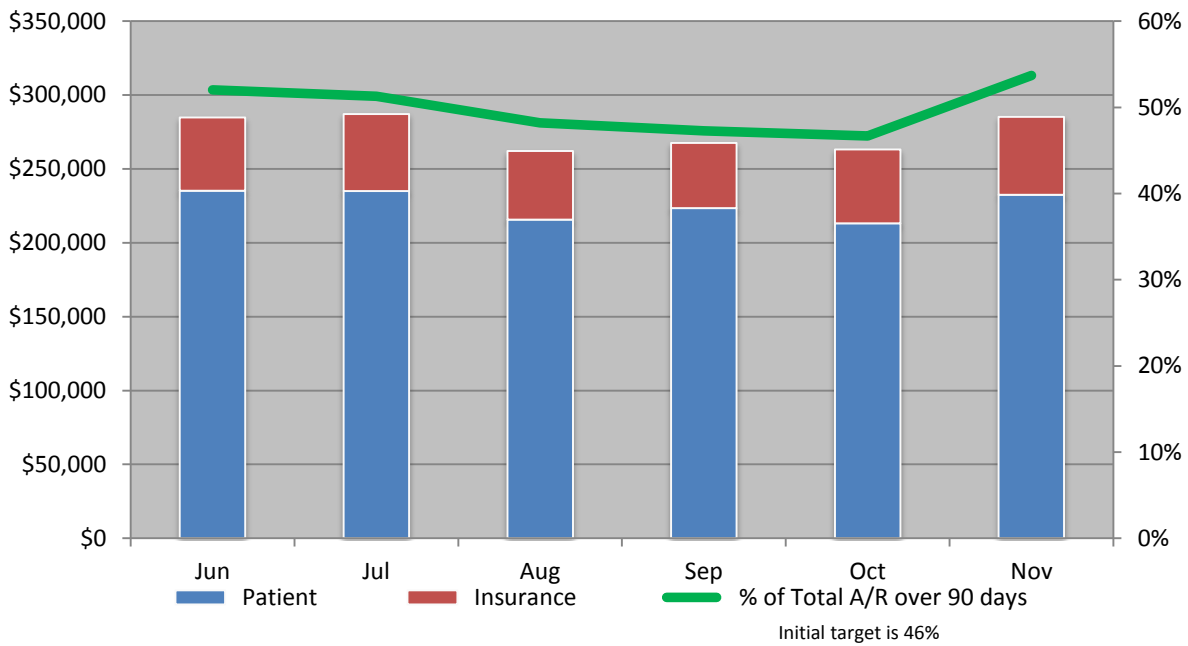
Average Days in Accounts Receivable

measures the number of days it takes from date of service to the time we receive payment
target range 30-45 days (AR balance divided by average charges per day)

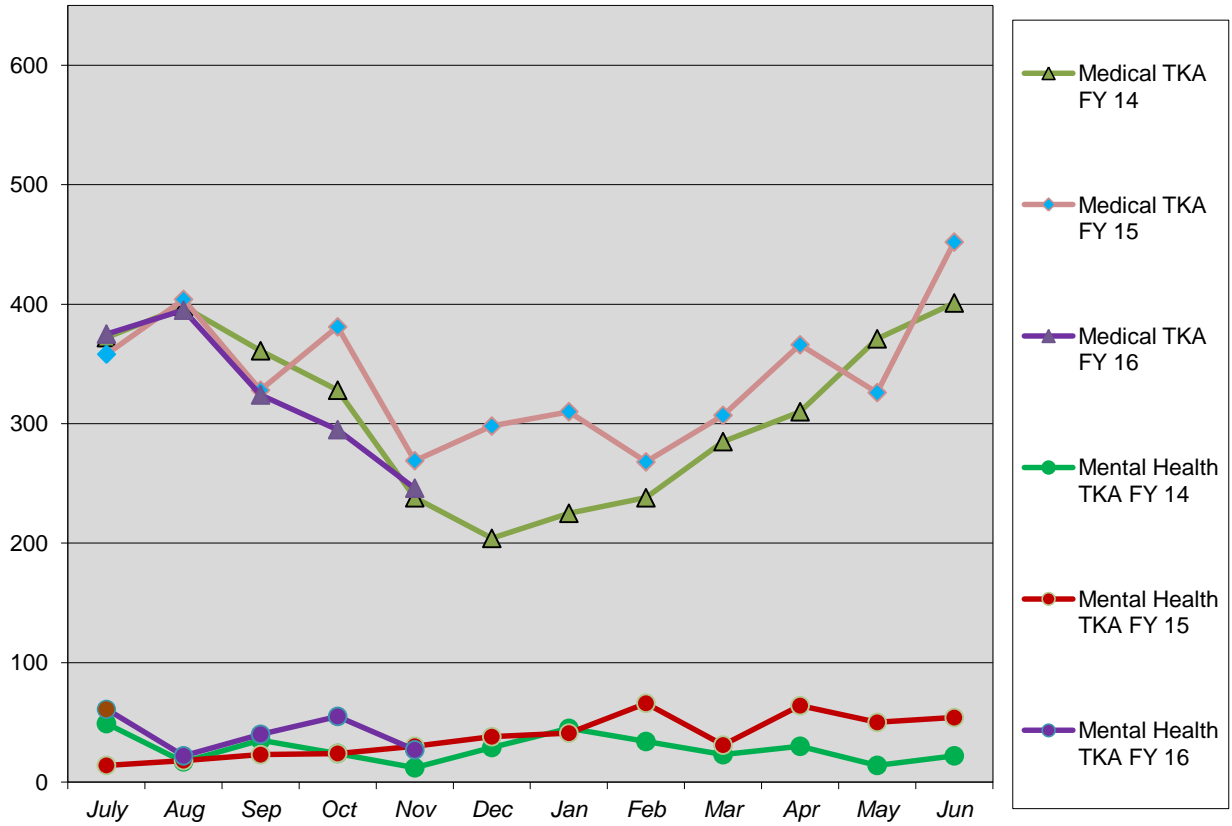


Actual	52	53	54	57	58	53
Target Low	30	30	30	30	30	30
Target High	45	45	45	45	45	45

A/R over 90 Days



Talkeetna Encounter History



Willow Encounter History

